

# Los reflexivos

---

You use the reflexive when the action is being done to the person you are describing. For example: I wash myself.

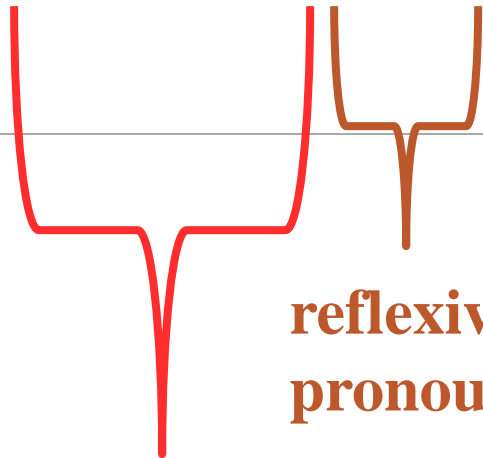
The infinitives have se attached to them. The se changes based on the subject (who you are talking about).

# Verbos Reflexivos

HAVE TWO PARTS:

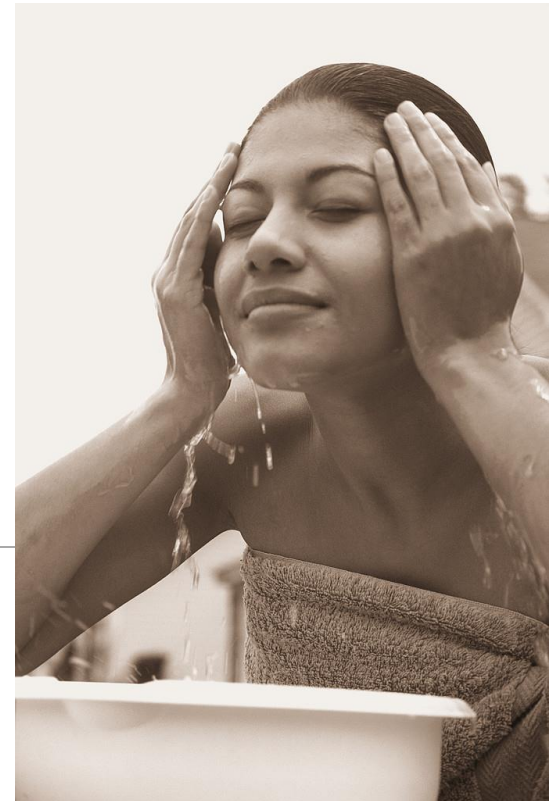
A REFLEXIVE PRONOUN AND  
VERB INFINITIVE

lavarse



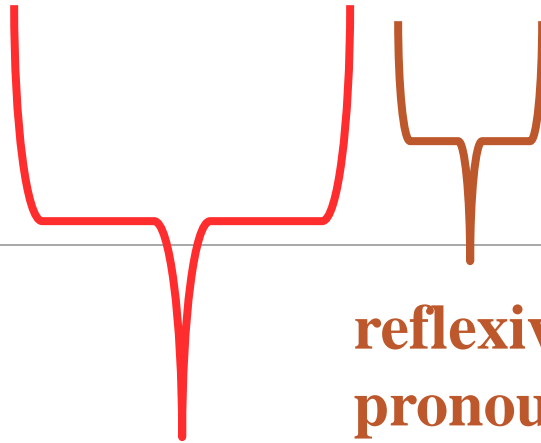
verb

reflexive  
pronoun



WE HAVE SEVERAL OF THESE VERBS IN OUR  
NEW VOCABULARY

bañarse



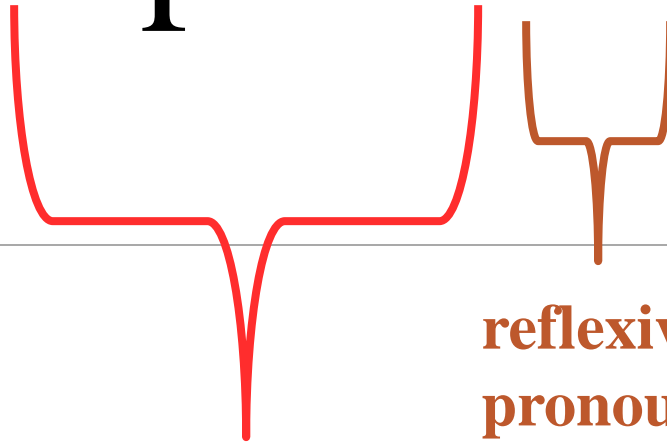
**verb**

**reflexive  
pronoun**



HOW ABOUT THIS ONE?

cepillarse



**verb**

**reflexive  
pronoun**



AND THIS ONE?

maquillarse

**verb**

**reflexive  
pronoun**



A. lavarse

B. lavar



A. cepillarse

B. cepillar

---



A. afeitarse

B. afeitar

---





A. lavarse

B. lavar

---



A. duchar

B. duchar

---



A. maquillarse

B. Maquillar

---



Reflexive pronouns are placed before the verb:

- Lucy se levanta a las diez.
- 

◦ Pronouns are:

- Me
- Te
- Se
- Nos
- Os
- Se

# lavarse (to wash oneself)

---

Me lavo las manos.

Te lavas las manos.

Se lava

Nos lavamos

Os laváis

Se lavan

# irse (to leave)

---

Me voy

Te vas

Se va

Nos vamos

Os vais

Se van

# Los reflexivos

---

When using a reflexive with a part of the body, use a definite article:

- Me lavo el pelo con champú y las manos con jabón.
- NOT
- Me lavo mi pelo. This is never correct!

# Practica

---

Mis padres \_\_\_\_\_ (levantarse) a las cinco.

1 – Which pronoun do we use?

- (me, te, se, nos, os, se)

2 – Conjugate the verb for “Mis padres”



Mi hermana y yo \_\_\_\_\_ ( ducharse ) a las siete y media.

---

1. Which pronoun do we use?

- (me, te, se, nos, se)

2. How do we conjugate for “Mi hermana y yo”?

# Conjugate the verb:

---

1. Mi hermana \_\_\_\_\_ (acostarse – o:ue) temprano todos los días.
2. Mis padres y yo siempre \_\_\_\_\_ (cepillarse) los dientes.
3. Primero, yo \_\_\_\_\_ ( ducharse).
4. Usualmente, mis hermanos \_\_\_\_\_ (bañarse) por la noche.
5. Tú \_\_\_\_\_ (despertarse – e:ie) muy tarde.